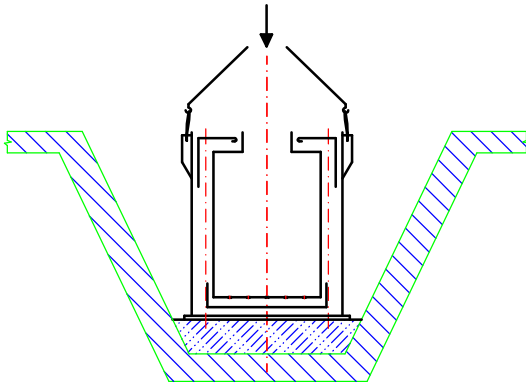
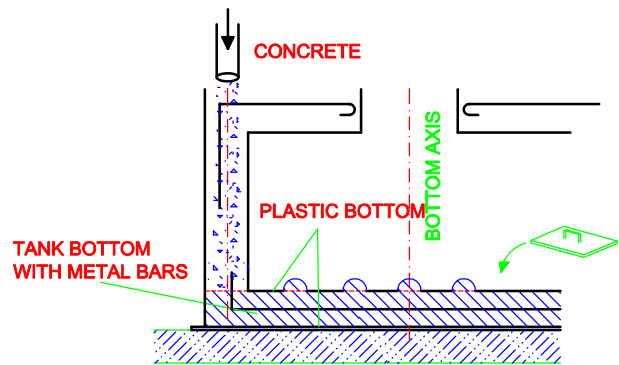


① Tank placing



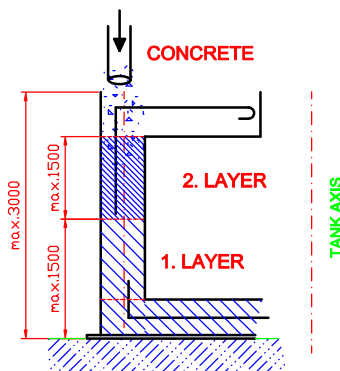
Placing the tank into excavation pit on a concrete base-plate.

② Tank bottom concreting



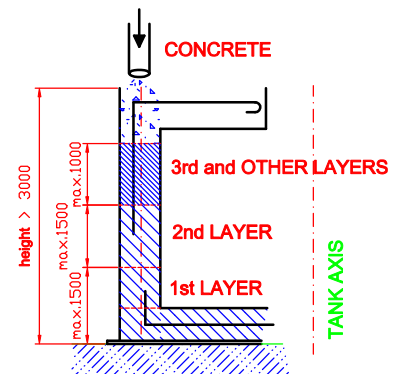
I. Phase - pour the concrete into the double bottom with metal bars equally around the whole tank perimeter. After pouring the concrete, it will get through the holes in the "false" bottom. Level the concrete! Continue in concreting only after the concrete in bottom got hard.

③ Tank walls concreting



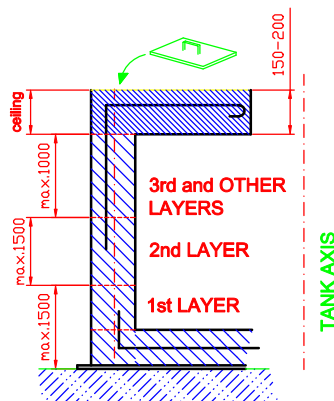
II. Phase - after the tank bottom is hard, put 1st concrete layer of max. 1500mm. After the 1st layer is hard, go on with 2nd layer the same way. Valid for tanks of max. height of 3000 mm.

④ Tank walls concreting



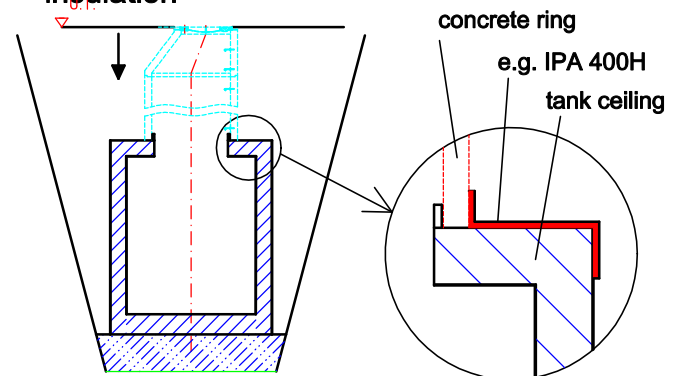
III. Phase - after previous layers are hard, go on with concreting 3rd and following layers, each of max. 1000mm. Valid for tanks higher than 3000mm.

⑤ Tank ceiling concreting



IV. Phase - Ceiling concreting and leveling the surface. The ceiling may be concreted only after the last layer is hard!!!

⑥ Ceiling insulation



Ceiling insulation is done after concreting the ceiling and placing the concrete rings. Insulation folio (e.g. IPA) is laid on the tank ceiling and edges are welded to the tank wall and tank extension.



- CONCRETE MUST BE POURED EQUALLY AROUND THE WHOLE PERIMETER!!!
- CONCRETE QUALITY SPECIFIED IN PARTICULAR INSTALLATION DOCUMENTS!!!
- MACHINE VIBRATION FORBIDDEN!!!

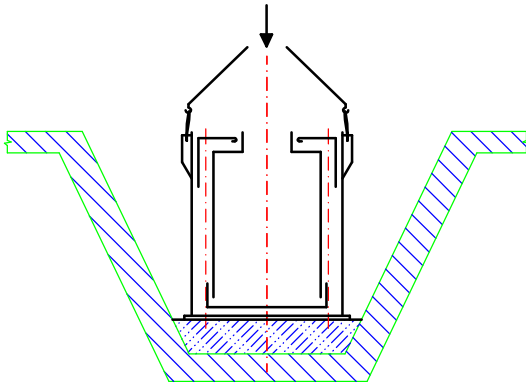
- NOT KEEPING THE TECHNOLOGICAL PROCEDURE MAY RESULT IN DAMAGING THE TANK WALL!!!

- NOT INSULATING THE CEILING MAY RESULT IN BENDING THE TANK WALLS!!!



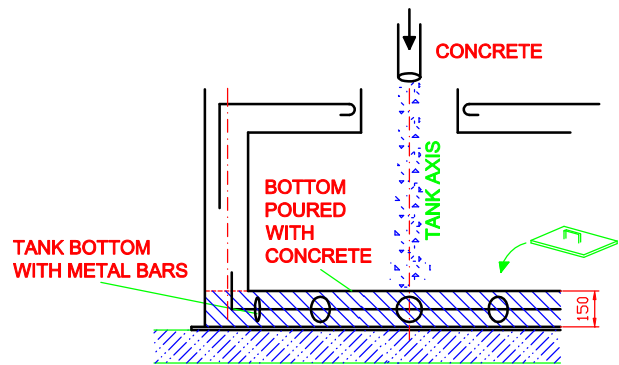
PROCEDURE OF DOUBLE-WALL TANK CONCRETING for tanks with metal bars reinforcement, type EO/PB/SV , ØD >2000mm

① Tank placing



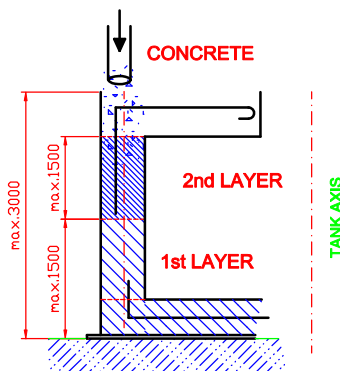
Placing the tank into excavation pit on a concrete base-plate.

② Tank bottom concreting



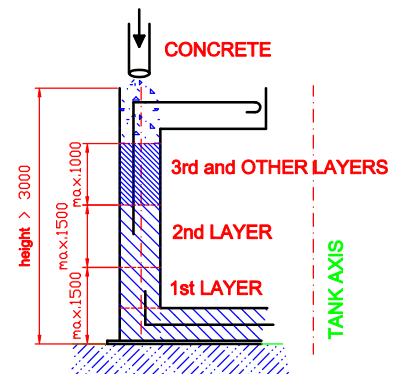
I. Phase - pour the concrete into the metal-reinforced bottom equally around the whole tank perimeter through inside. Level the concrete after pouring. Continue only after the bottom is hard.

③ Tank walls concreting



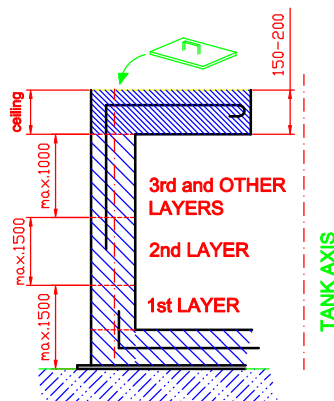
II. Phase - after the tank bottom is hard, put 1st concrete layer of max. 1500mm. After the 1st layer is hard, go on with 2nd layer the same way. Valid for tanks of max. height of 3000mm.

④ Tank walls concreting



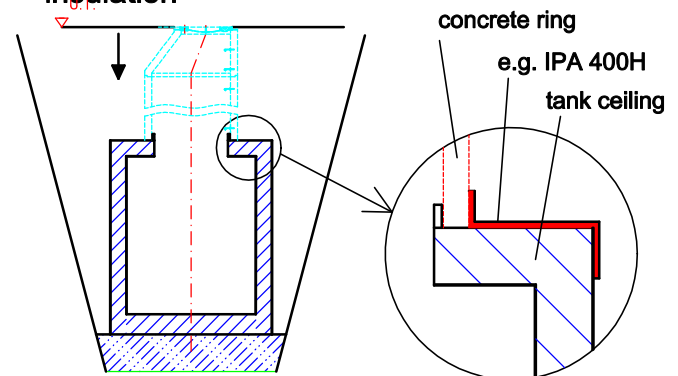
III. Phase - after previous layers are hard, go on with concreting 3rd and following layers, each of max. 1000mm. Valid for tanks higher than 3000mm.

⑤ Tank ceiling concreting



IV. Phase - Ceiling concreting and leveling the surface. The ceiling may be concreted only after the last layer is hard!!!

⑥ Ceiling insulation



Ceiling insulation is done after concreting the ceiling and placing the concrete rings. Insulation folio (e.g. IPA) is laid on the tank ceiling and edges are welded to the tank wall and tank extension.



- CONCRETE MUST BE POURED EQUALLY AROUND THE WHOLE PERIMETER!!!
- CONCRETE QUALITY SPECIFIED IN PARTICULAR INSTALLATION DOCUMENTS!!!
- MACHINE VIBRATION FORBIDDEN!!!

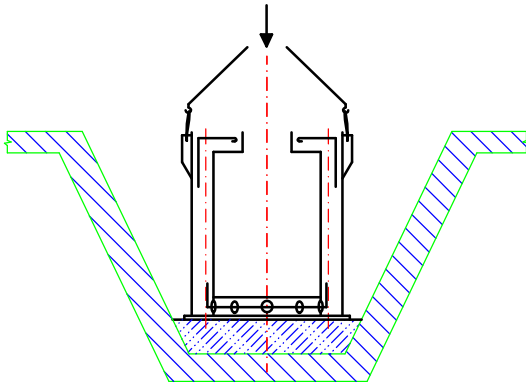
- NOT KEEPING THE TECHNOLOGICAL PROCEDURE MAY RESULT IN DAMAGING THE TANK WALL!!!

- NOT INSULATING THE CEILING MAY RESULT IN BENDING THE TANK WALLS!!!



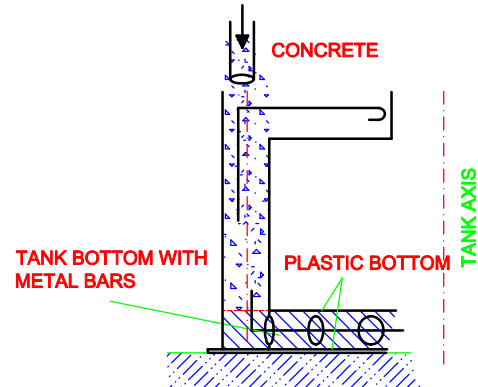
PROCEDURE OF DOUBLE-WALL TANK CONCRETING for tanks with metal bars reinforcement, type EO/PB/SV , ØD <2000mm

① Tank placing



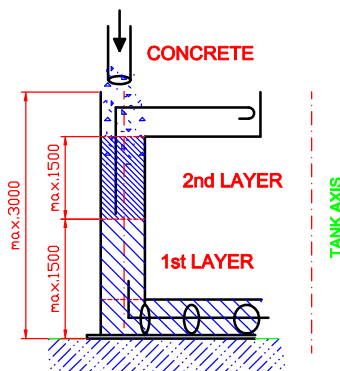
Placing the tank into excavation pit on a concrete base-plate.

② Tank bottom concreting



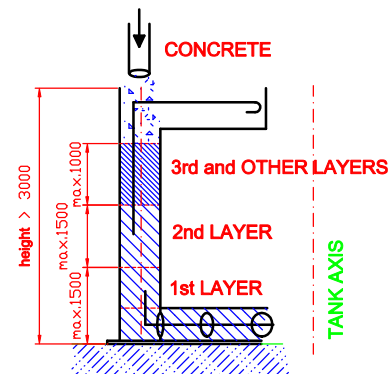
I. Phase - pour the concrete into the metal-reinforced bottom equally around the whole tank perimeter through holes in bottom part of the tank wall. These holes stay poured in concrete. Continue only after the bottom is hard.

③ Tank walls concreting



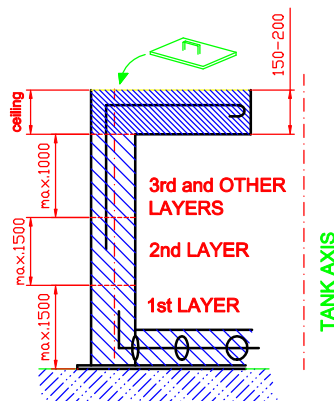
II. Phase - after the tank bottom is hard, put 1st concrete layer of max. 1500mm. After the 1st layer is hard, go on with 2nd layer the same way. Valid for tanks of max. height of 3000mm.

④ Tank walls concreting



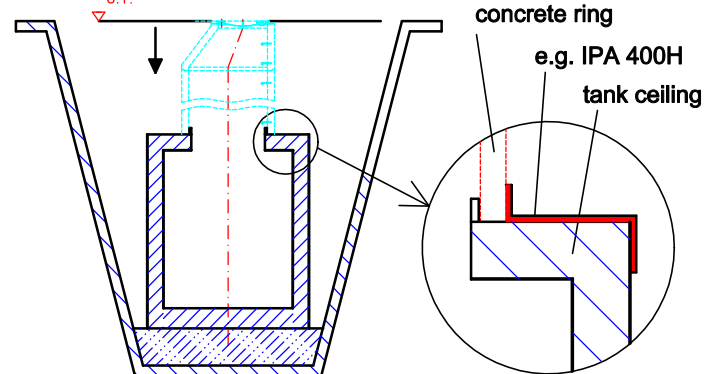
III. Phase - after previous layers are hard, go on with concreting 3rd and following layers, each of max. 1000mm. Valid for tanks higher than 3000mm.

⑤ Tank ceiling concreting



IV. Phase - Ceiling concreting and leveling the surface. The ceiling may be concreted only after the last layer is hard!!!

⑥ Ceiling insulation



Ceiling insulation is done after concreting the ceiling and placing the concrete rings. Insulation folio (e.g. IPA) is laid on the tank ceiling and edges are welded to the tank wall and tank extension.



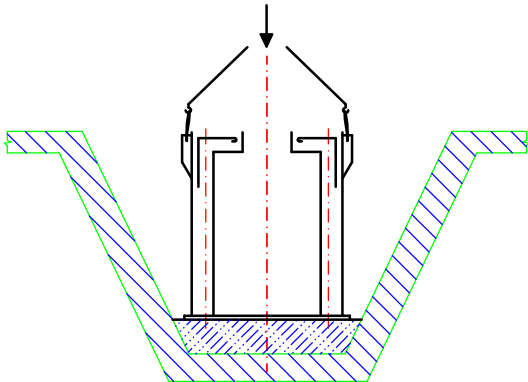
- CONCRETE MUST BE POURED EQUALLY AROUND THE WHOLE PERIMETER!!!
- CONCRETE QUALITY SPECIFIED IN PARTICULAR INSTALLATION DOCUMENTS!!!
- MACHINE VIBRATION FORBIDDEN!!!

- NOT KEEPING THE TECHNOLOGICAL PROCEDURE MAY RESULT IN DAMAGING THE TANK WALL!!!

- NOT INSULATING THE CEILING MAY RESULT IN BENDING THE TANK WALLS!!!

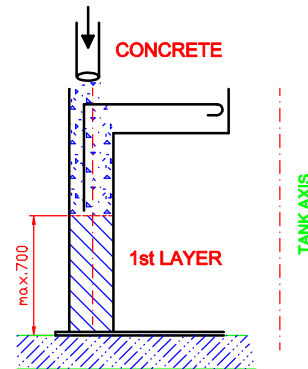


① Tank placing



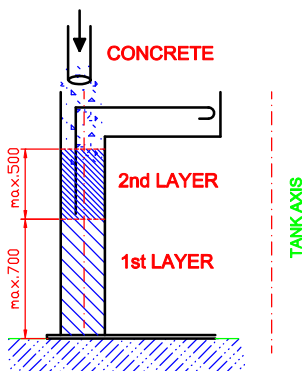
Placing the tank into excavation pit on a concrete base-plate.

② Tank walls concreting



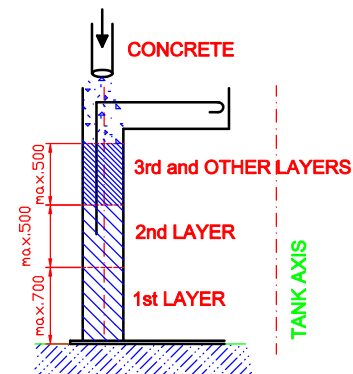
I. Phase - 1st layer must be concreted equally around the whole tank perimeter, max. height of 700mm.

③ Tank wall concreting



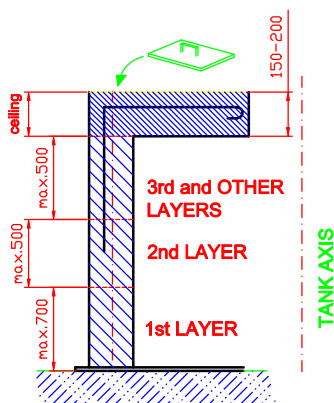
II. Phase - after 1st layer is hard, go on with concreting the 2nd layer equally around the whole tank perimeter, max. height of 500mm.

④ Tank walls concreting



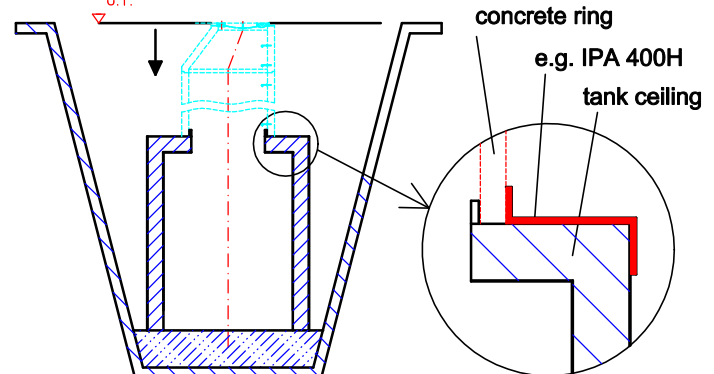
III. Phase - after previous layers are hard, go on with concreting the 3rd and following layers equally around the whole tank perimeter, max. height of 500mm.

⑤ Tank ceiling concreting



IV. Phase - Ceiling concreting and leveling the surface. The ceiling may be concreted only after the last layer is hard!!!

⑥ Ceiling insulation



Ceiling insulation is done after concreting the ceiling and placing the concrete rings. Insulation folio (e.g. IPA) is laid on the tank ceiling and edges are welded to the tank wall and tank extension.



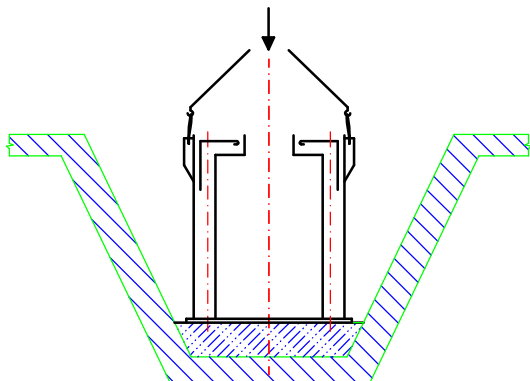
- CONCRETE MUST BE POURED EQUALLY AROUND THE WHOLE PERIMETER!!!
- CONCRETE QUALITY SPECIFIED IN PARTICULAR INSTALLATION DOCUMENTS!!!
- MACHINE VIBRATION FORBIDDEN!!!

- NOT KEEPING THE TECHNOLOGICAL PROCEDURE MAY RESULT IN DAMAGING THE TANK WALL!!!

- NOT INSULATING THE CEILING MAY RESULT IN BENDING THE TANK WALLS!!!

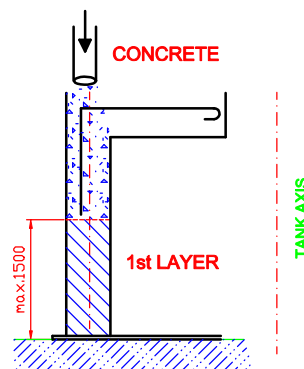


① Tank placing



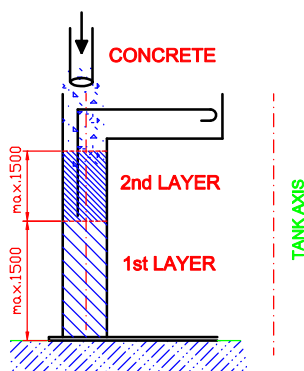
Placing the tank into excavation pit on a concrete base-plate.

② Tank walls concreting



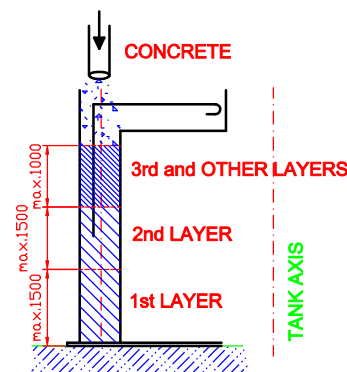
I. Phase - 1st layer must be concreted equally around the whole tank perimeter, max. height of 1500mm.

③ Tank wall concreting



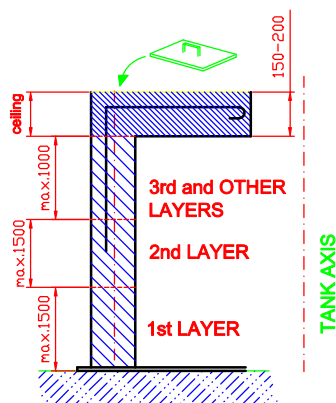
II. Phase - after the 1st layer is hard, continue to concrete the 2nd layer equally around the whole tank perimeter, max. height 1500mm. Valid for tanks of total height of 3000mm.

④ Tank walls concreting



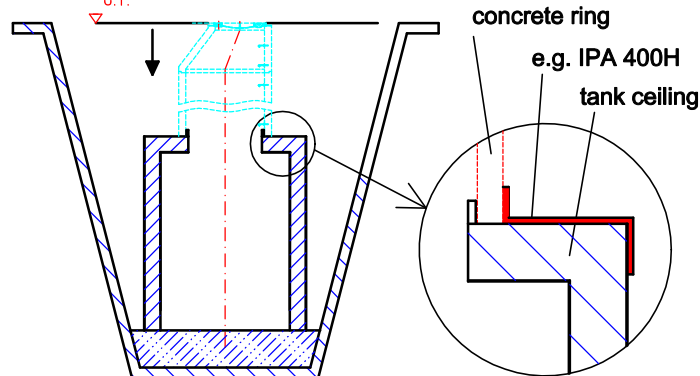
III. Phase - after previous layers are hard, go on with concreting 3rd and following layers equally, each of max. 1000mm. Valid for tanks higher than 3000mm.

⑤ Tank ceiling concreting



IV. Phase - Ceiling concreting and leveling the surface. The ceiling may be concreted only after the last layer is hard!!!

⑥ Ceiling insulation



Ceiling insulation is done after concreting the ceiling and placing the concrete rings. Insulation folio (e.g. IPA) is laid on the tank ceiling and edges are welded to the tank wall and tank extension.



- CONCRETE MUST BE POURED EQUALLY AROUND THE WHOLE PERIMETER!!!
- CONCRETE QUALITY SPECIFIED IN PARTICULAR INSTALLATION DOCUMENTS!!!
- MACHINE VIBRATION FORBIDDEN!!!

- NOT KEEPING THE TECHNOLOGICAL PROCEDURE MAY RESULT IN DAMAGING THE TANK WALL!!!

- NOT INSULATING THE CEILING MAY RESULT IN BENDING THE TANK WALLS!!!

